



IC Touch

Temperature test system for Mounted devices

- ◆ Monitor/ Controls temperatures of IC on the PCB
- ◆ Wide Temperature Range: -40 to +120 degree
- ◆ Apply a skeleton-type Peltier module
- ◆ Quick temperature change:
From room temperature to -40 degree *in 2 minutes!*
From -40 degree to + 120 degree *in 2 minutes!*



● Overview

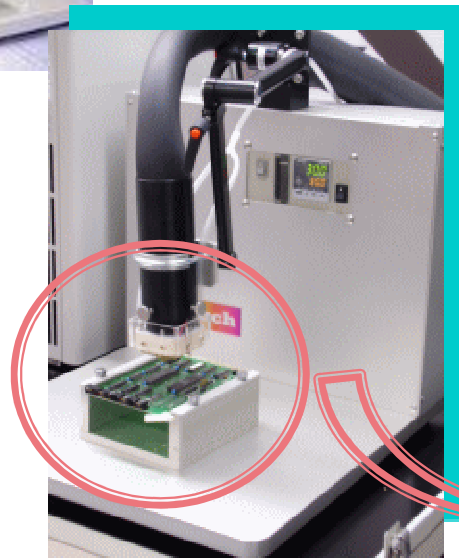
The IC Touch is compact, light weight temperature tester incorporating skeleton-type Peltier Module. Attachment (IC touch unit) connected from skeleton-type Peltier Module can touched directly for IC Devices on PCB to enables highly effective test. The IC Touch approach allows desktop collection of temperature stress data easier than current way as the isothermal vessels or pressurization equipment required by conventional test setups. The accompanying controller can be used to control temperature to a precision of plus or minus 0.1 degree, and additional custom attachments can be ordered to match the dimensions of the ICs that you need to test. The IC Touch utilizes a Pt100 temperature sensor to detect and control the temperature of the contact attachment, failures and assuring device quality.



IC touch desktop type



*Compact and low
price
for temperature
test!!*



Multi-joint arm enables complete control to touch the sample such as mounted on board, set up in the tester and so on.